

# Community Safety Council

York University

# Terms of Reference

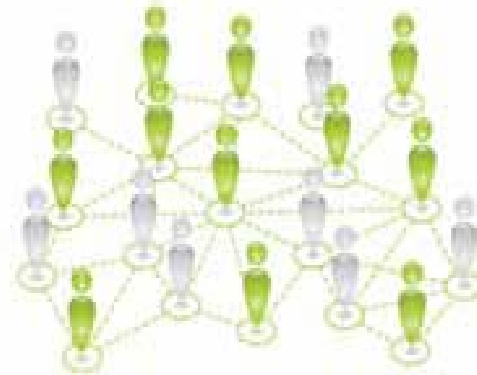
- Advisory to the President with annual report
- Focus on safety outcomes, practices and policies
- Safety broadly defined (including but not limited to issues relating to women and transpeople, physical environment and violence prevention)
- Inclusive membership
- Collaborative and proactive

# Mandate

- Amplify issues
- Facilitate coordination of safety related activities
- Focus attention of relevant administrative bodies
- Forum for discussion of emerging challenges relating to safety
- Check and balance on all groups and departments that have formal and informal accountability for safety in order to ensure these issues are always top of mind, that nothing falls through the cracks and that tough questions and meaningful discussions are facilitated

# Goal

- Enhance a **culture** of safety and respect within York University



# Expectations of Members

- Members attend all meetings (or send regrets, no delegates) and come prepared
- Liaison and proactive communications with others on campus (share minutes, decisions and discussions)
- Quorum 1/3 of the members
- Consensus decisions when possible or majority vote
- Declare conflict of interest and maintain confidentiality

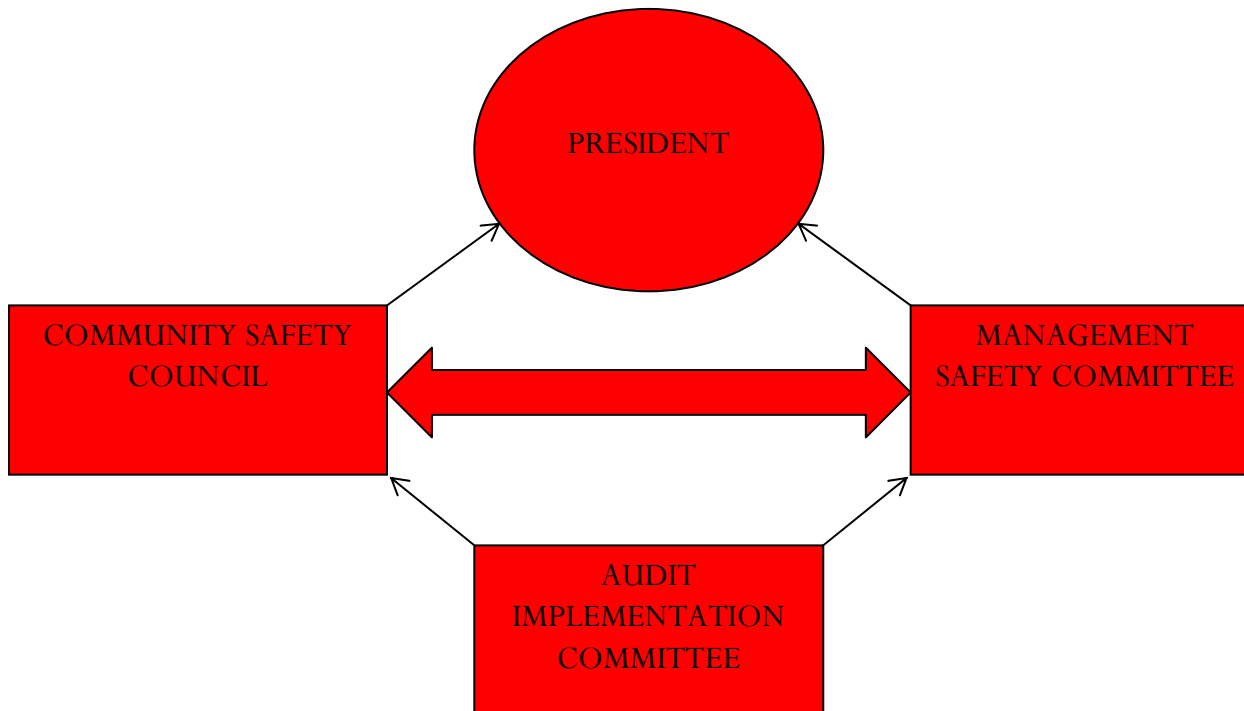
# Desired Spirit of the Meetings

- Collegiality
- Democratic cooperation, equity and inclusion
- Non-defensive stance
- Active listening
- Speakers list
- Multiple perspectives
- Generative dialogue and productive debate

# Options for Doing the Work

- Create Ad Hoc Committees, Working Groups or Task Forces
- Community Forums around key issues
- Reports from outside experts
- Input from Administrators and others with responsibility for safety

# STRUCTURE





# Election of the Vice Chair

- Please identify your interest in this position and provide the Council with a brief statement of your interests and qualifications
- Preference is to have position filled by a student member
- Help set the agenda of the meetings and oversee the process
- One year term, renewable once

# Priorities Identified Last Year

- Training and Education
- Security Services
- Awareness and Communication
- Physical Environment
- Developing a Culture of Safety
- Community Relations

# What is CPTED?

## Crime Prevention Through Environmental Design

- CPTED is a pro-active crime prevention strategy used by planners, architects, police services, security professionals and everyday users of space.
- CPTED summarizes that the proper design of the *built environment* (e.g., human made surroundings such as buildings, pathways, streets) can lead to a reduction in the potential for crime and improve quality of life in communities.
- Emphasis is placed on the physical environment, productive use of space, and behaviour of people to create environments that are absent of *environmental cues* (e.g., *unlit pathways* and streets) that cause opportunities for crime to occur.

# Election of the Audit Committee

- Role to liaison with the Management Safety Audit Implementation Committee (chaired by Vice President Brewer)
- Monitor implementation of the METRAC report
- Chaired by faculty member (Catherine Davidson Associate University Librarian has agreed to take on the position)
- Rob Castle and two other administrators
- 3 students/community members
- Up-date CSC and make recommendations